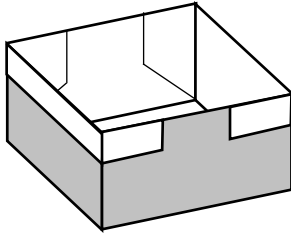


Box (Traditional)

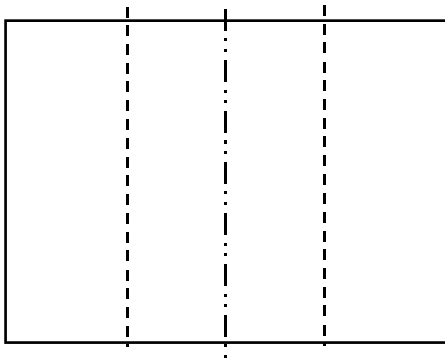


Diagramed by Ching-Yu Hung in May '04.

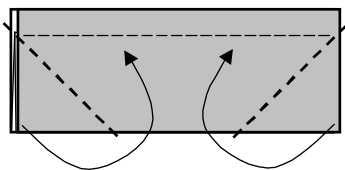
I have seen these around. I think it's a traditional model. You can use it for snack tray or for trash.

Start with a rectangular paper. Letter/A4 size will do. Square paper is fine, too.

1
With the inside of the paper facing up, fold as shown. The two valley folds should be symmetrical with respect to the mountain fold in the center. The two outer sections should be somewhat wider than the inner sections.

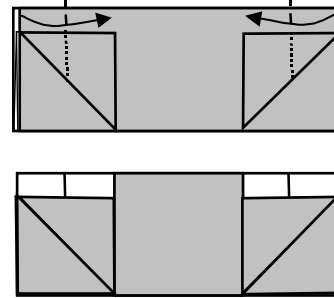


2
With the two edges of the paper pointing up, fold the lower-left and lower-right corners at 45 degrees. Fold up to the center line hidden under the first layer.

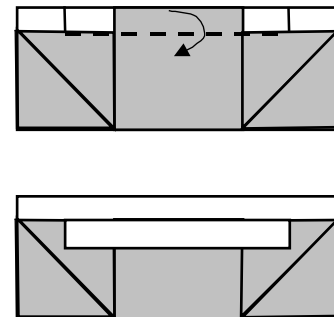


3
First make crease lines, then fold in the two sides under the triangular pockets.

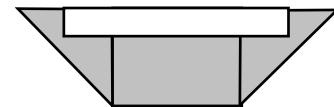
(This optional step increases the strength of the walls. If you don't get it you can skip this step.)



4
Fold down the top of the flap to flush with the center line behind.



5
Flip over and repeat steps 2, 3, and 4 on the other side.



What you have is the pre-deploy form of the box. You can make a bunch of them and stack them flattened in another box.

6
To form a box, just unfold the center line and open it up from the center.

